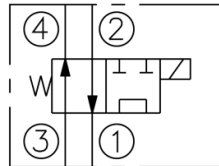
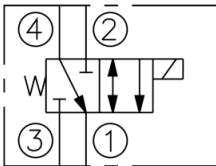
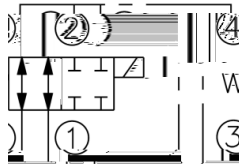
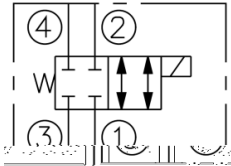
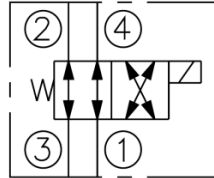
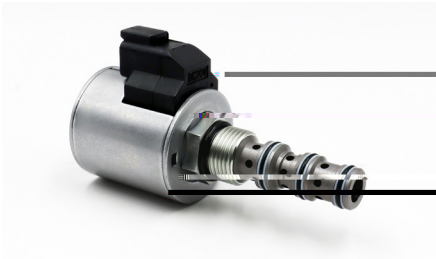
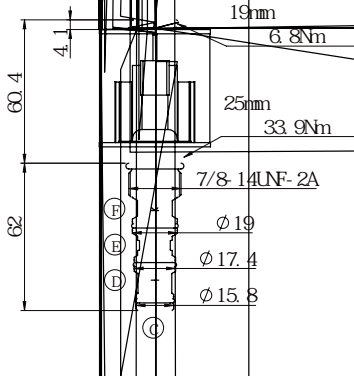


valve



SV10-4X:
4-Way,2-Position Solenoid-Operated Directional Spool Valve

A Cartridge-style Direct-acting Spool-type Solenoid Directional Valve



IP69K

E

- Poppet is hardened and ground to guarantee minimal wear and to extend service life. All external surfaces are zinc plated and corrosion-proof. All valve parts are made of high strength steel. Compact size.
- Continuous-duty rated coil.
- Optional coil voltages and terminations.
- All ports may be fully pressurized.
- Unitized, molded coil design.
- Optional waterproof E-Coils rated up to IP69K.
- Industry-common cavity.



	207bar
	276 bar
	23l/min
	82 cc /min @ 207bar 82 cc /min @ 207bar pressure rating
Coil rated load	85% -115% Work continuously in the rated voltage range of 85%-115%
	207bar 85% 85% of rated value at 207bar
	E 12VDC 1.7A 24VDC 0.85A E-coil: 1.7A at 12VDC; 0.85A at 24VDC
	Zn/Fe - standard Zn/Ni
	No restrictions
Weight	0.18kg
	-40° C to 100° C
Fluids	Mineral - based or synthetics with lubricating properties
Viscosities	7,4 to 420 cSt
	ISO VG 46 cSt
	20/18/15 ISO 4406 (maximum filtration admitted)
	VC10-4

④ ③ ②

①

SV10-40

When de-energized, the SV10-40 allows flow from port ④ to port ①, as well as from port ② to port ③. When energized, the spool shifts to open port ④ to port ③ and port ② to port ①.

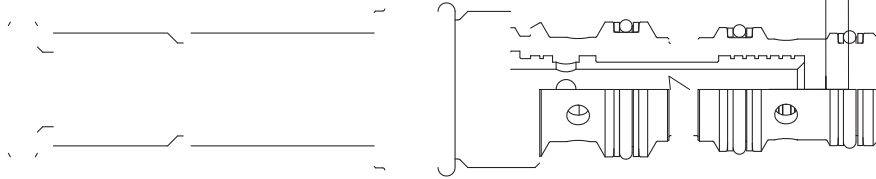
④ ③ ②



①

④ ③ ②

①



SV10-43

When de-energized, the SV10-43 allows flow from port 1 to port 2, as well as from port 3 to port 4. When energized, the spool shifts to open port 1 to port 3, but port 2 and port 4 are closed.

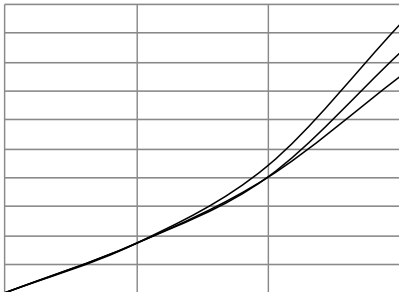
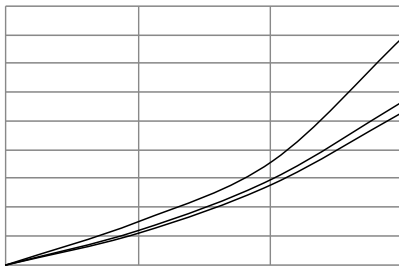
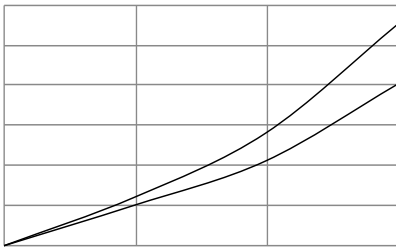
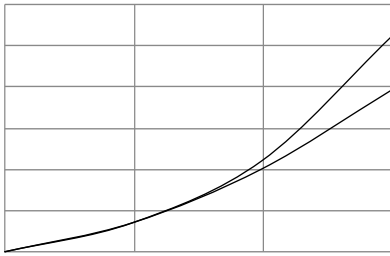
SV10-44

When de-energized, the SV10-44 allows flow from port 1 to port 2, as well as from port 3 to port 4. When energized, the spool shifts to open port 1 to port 3, but port 2 and port 4 are closed.



Test condition

45 46cSt
46cStoil at 45



HT



VC10-4

Solenoid Valves

