

Solenoid Directional valve

SV10-47X

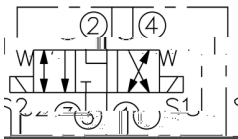
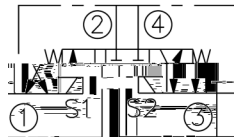
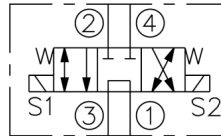
—344bar

SV10-47X Valve Series

U.S. Cartridge — 344 bar



Symbol



Description

4-Way,3-Position Solenoid-Operated Directional Spool Valve

A Cartridge-style Direct-acting Spool-type Solenoid Directional Valve

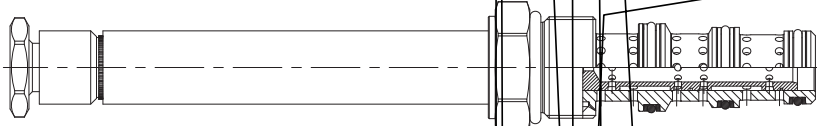


Technical Data

Pressure rating	
Maximum operating pressure	344 bar
Maximum flow	
Maximum internal leakage	
Coil rated load	Work continuously in the rated voltage range of
Minimum operate voltage	
Response time	valve, the first indication of state change
20 Coil initial current at 20	
External component treatment	Zn/Fe - standard Zn/Ni
Orientation	No restrictions
Weight	
Oil Temperature Range	
Fluids	synthetics with lubricating properties
Viscosities	
Oil testing condition	ISO VG 46 cSt
Filtration	
Cavity	



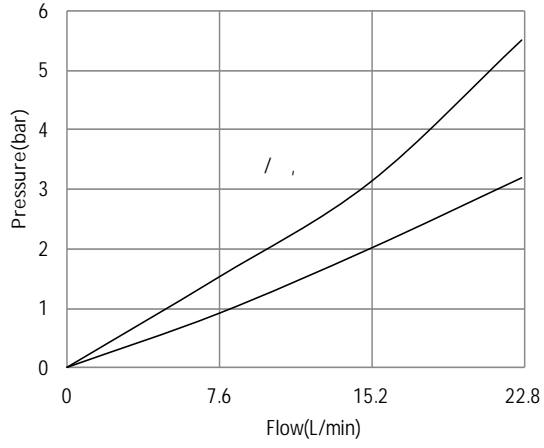
How it works



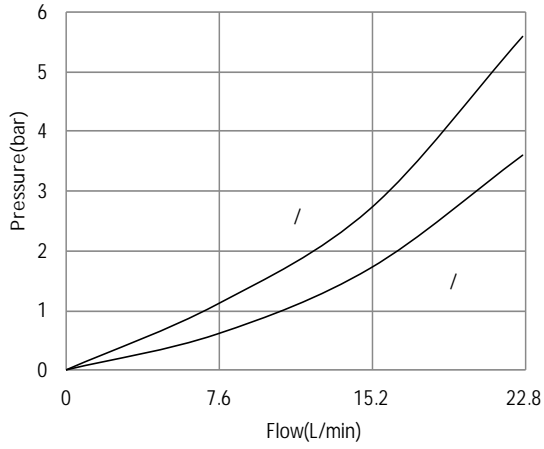


Performance

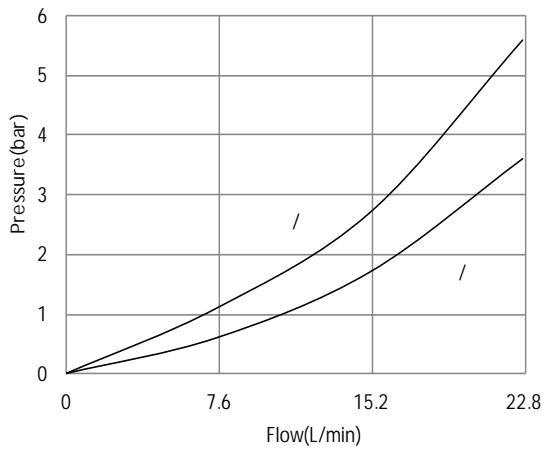
SV10-47B



SV10-47C



SV10-47D





Cavity

VC10-4

∅



Ordering code

Valve basic code

Coils Options	
	V
01	12
02	20
03	24