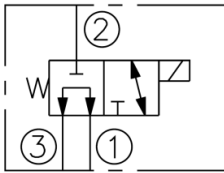
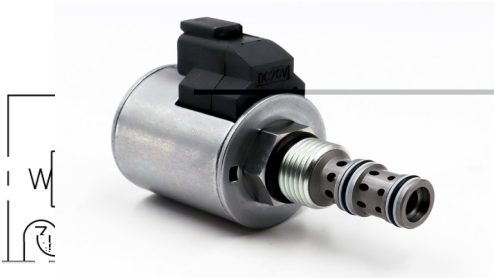


SV10-3X Valve Series

valve



A Cartridge-style Direct-acting Spool-type Solenoid Directional Valve



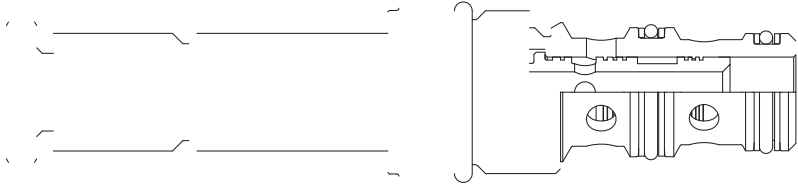
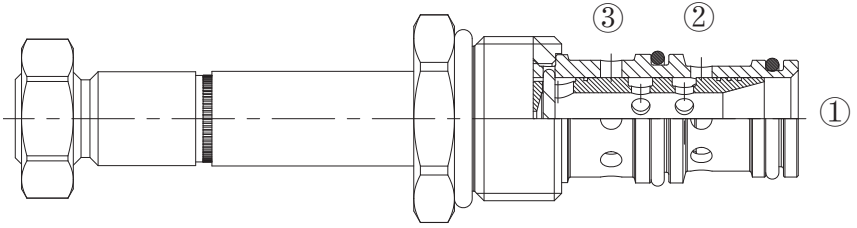
minimal wear
proof. All va

- Optional con
- All ports may be fully

- Industry-common cavity.

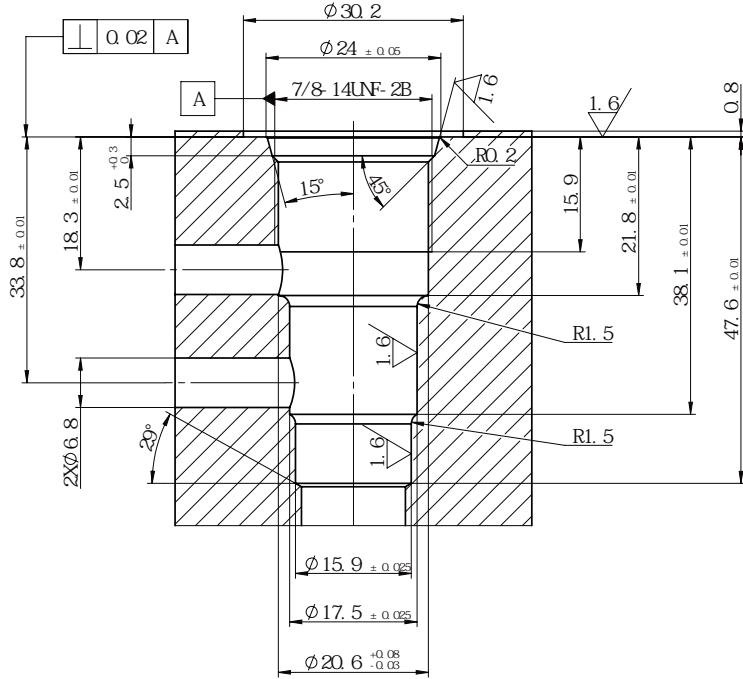


Coil rated load	Work continuously in the rated voltage range of
	Zn/Fe - standard Zn/Ni
	No restrictions
Weight	
Fluids	synthetics with lubricating properties
Viscosities	
	ISO VG 46 cSt





VC10-3



SV10 - 3X - **

Valve basic code

Symbol

Coils Options

Coils model	Voltage V
01	12
02	20
03	24